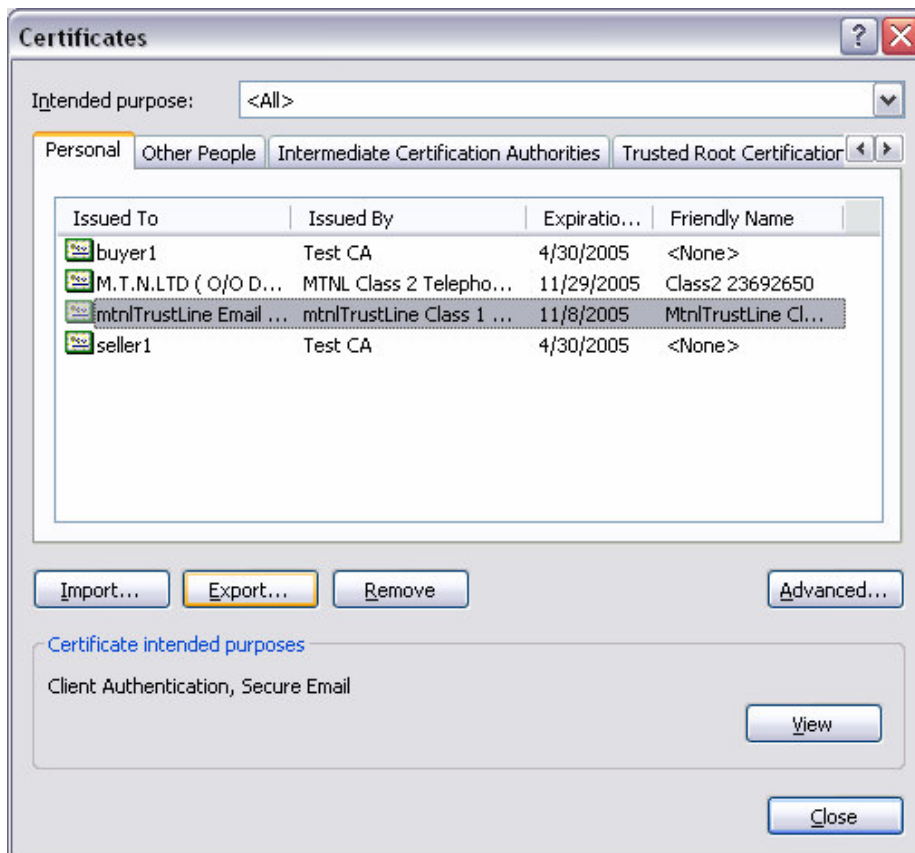


# Procedure for Importing and Exporting a Digital Certificate from one PC to another



1. Right click Internet Explorer, click Properties. In Content tab click Certificates.



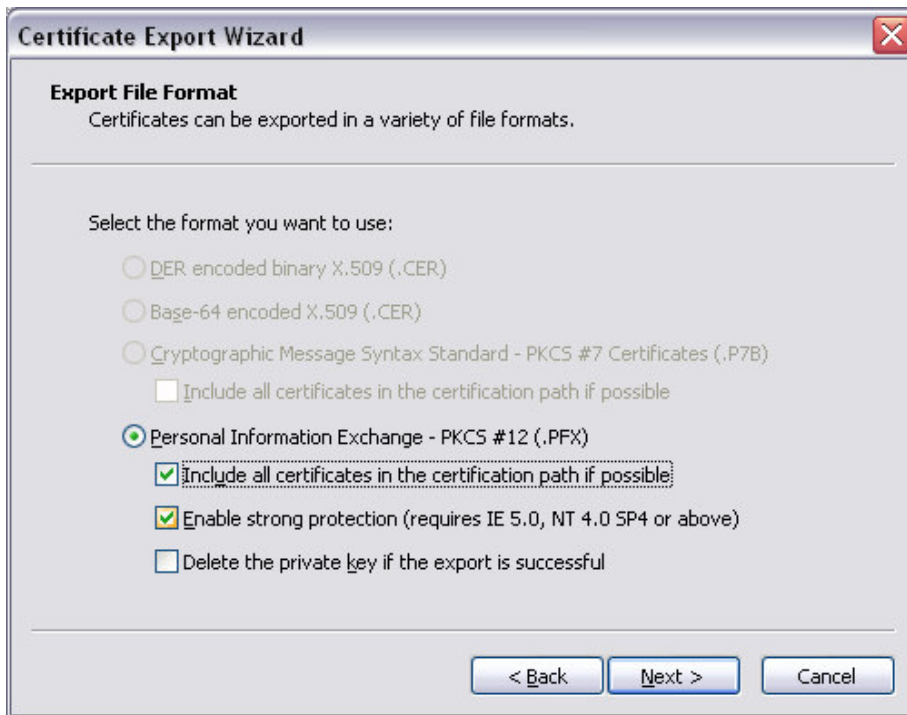
2. Choose the certificate to be Exported and click Export.



3. The Wizard Starts. Click Next.



4. Choose to export the private key, if you want to backup it or install and use this certificate on other PCs. Choose Do not export the private key if you want to distribute this certificate to others. Here we assume the first case.



5. Choose the options as shown.

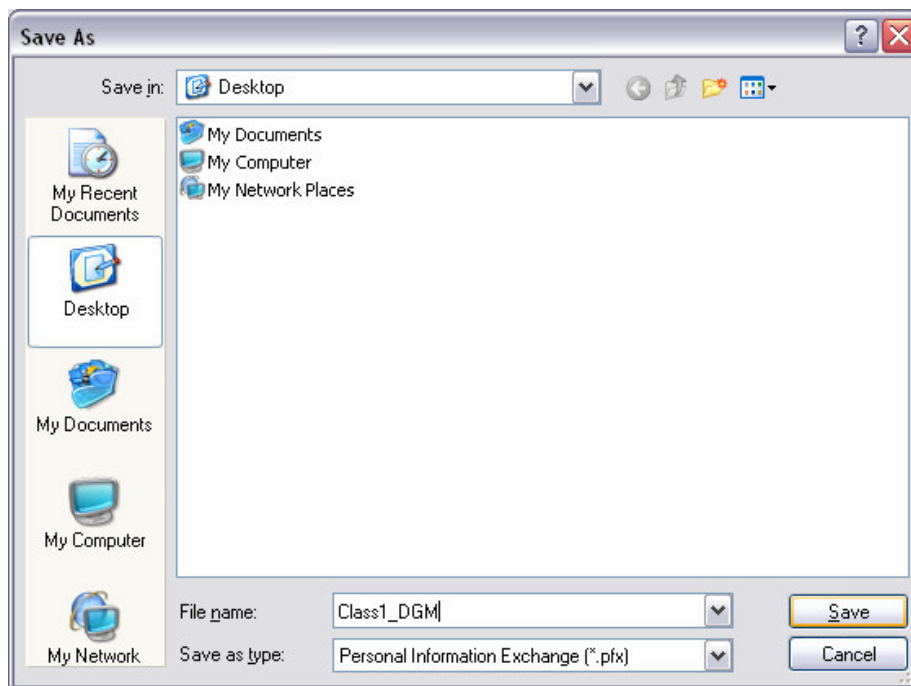
If you plan to remove the private key from this PC, check the last option also.



6. Enter any password of your choice, but it should be memorized well, as it will be needed at the time of import.



7. Click Browse.



8. Choose a folder (e.g. Desktop) and enter some filename. Keep the default extension.



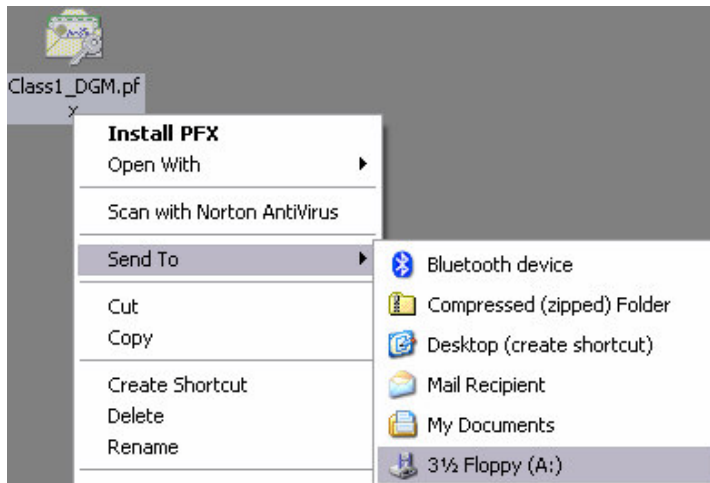
9. Click finish.



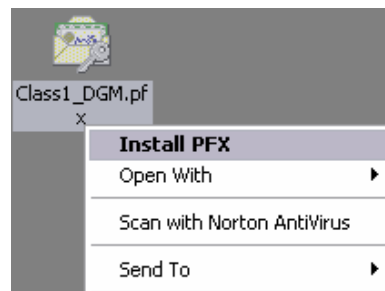
10. Click OK for this warning.



11. If export succeeds a message appears.



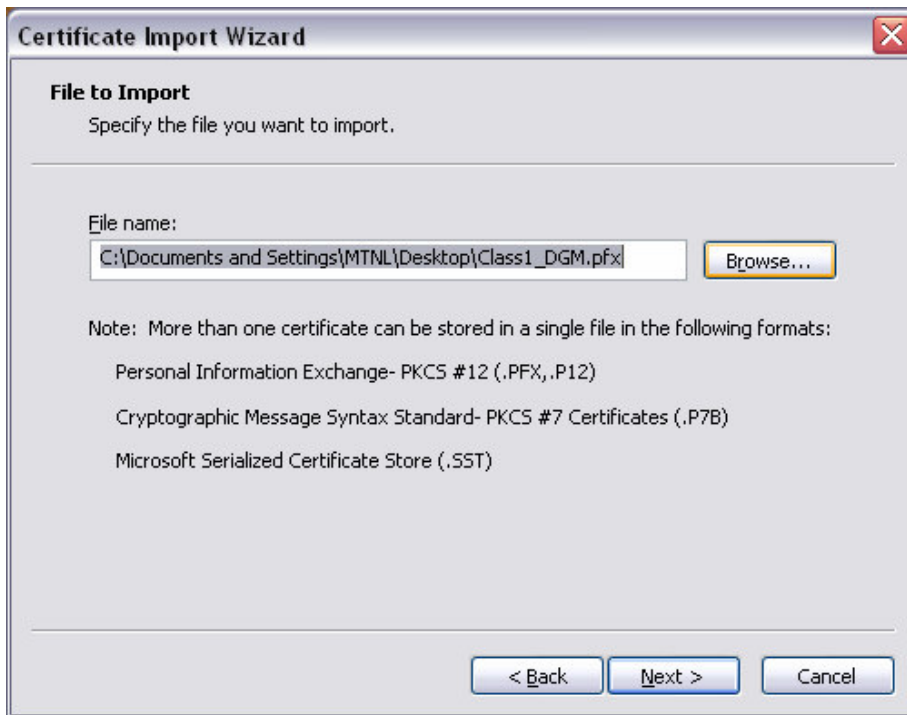
12. Locate the file and copy it to any media.



13. Copy this file to other PC. Right click and click Install PFX.



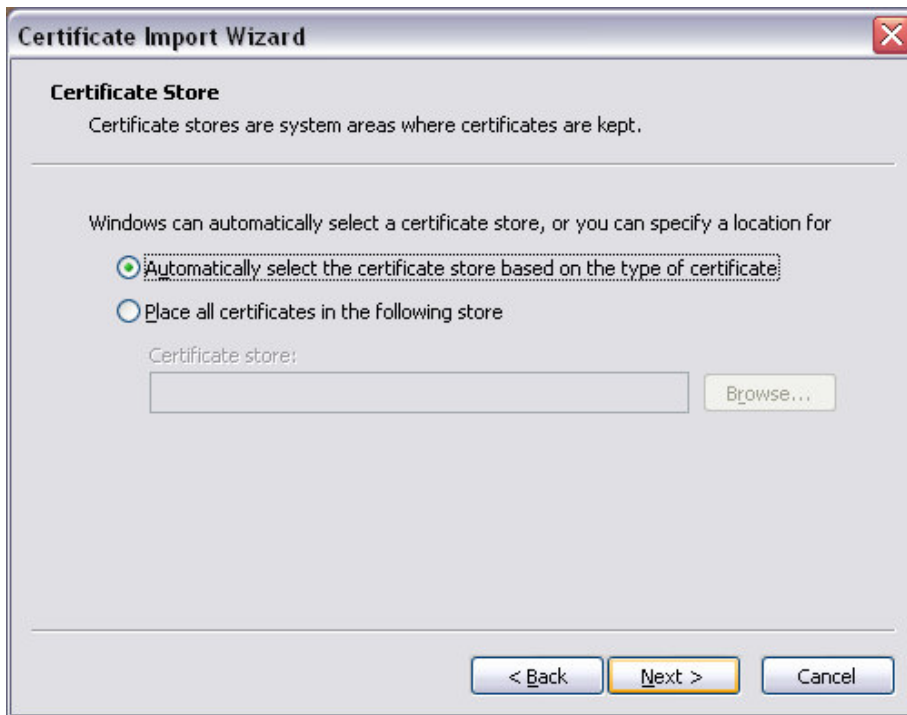
14. Wizard starts. Click Next.



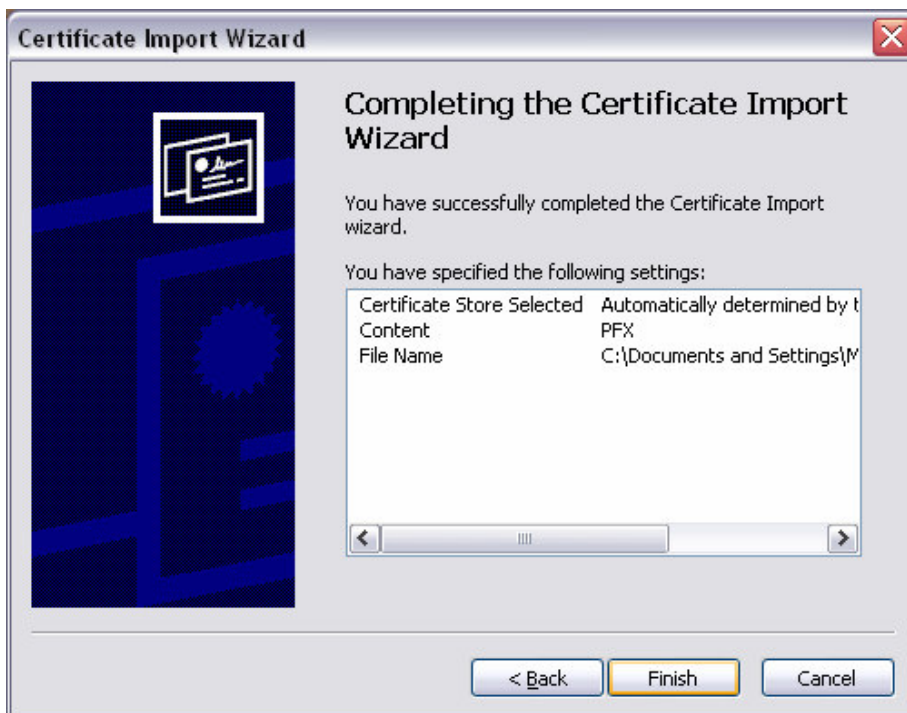
15. Browse to the file.



16. Enter the password used while exporting. Check the two options if needed.



17. Accept the defaults.



18. Click Finish.



19. Click OK for the warning.



20. Import successful message appears.